

Community Engagement is a process for increasing neighborhood capacity and involvement. Learn how to effectively engage with community members on neighborhood initiatives and projects.

Steps to achieving great Community Engagement:

- Know your community members
- Accept members at their current level of engagement
- Develop a plan to increase engagement as possible

Leads in governance of community such as neighborhood association board president, block captain, or other leadership capacity.

Reaches out to internal and external community partners to address local concern and dreams

The community looks to this individual for direction and support during times of strain or crisis.

Lives in the community but minimally engages in activities related to the neighborhood or with other community members, whether by life circumstances or by choice.

RESIDENT

Has neighborly relationships with other community members.

May attend events that focus on social or youth-based activities.

LEADER

VOLUNTEER

NEIGHBOR

PARTICIPANT

Invested in neighborhood betterment

Joins committees or the neighborhood watch.

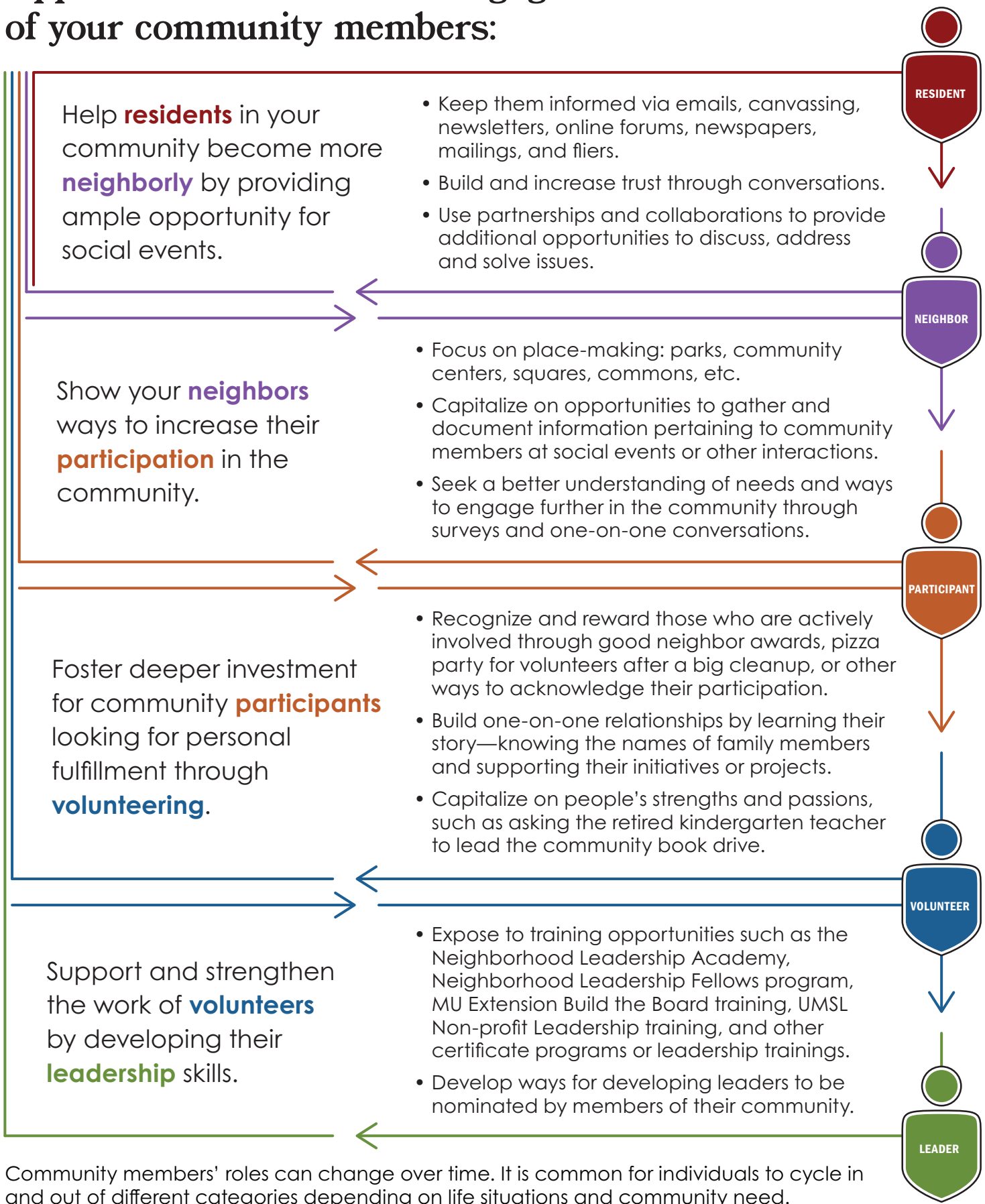
Participates in clean-ups, community garden volunteer days, or other community projects.

Attends community meetings that revolve around community concerns or upcoming projects

Participants in one-on-one forums or social groups

Completes surveys or polls pertaining to the community plans and efforts.

Opportunities to increase engagement of your community members:



Visit stlareavpc.org for more community engagement tools.